



THE GENERAL CONDITIONS

CELEBRATING
25
YEARS
OF
DESIGN-BUILD

PUBLISHED BY TREHEL CORPORATION

2ND QUARTER 2007



*Buildings and
Relationships
That Last A
Lifetime!*

Trehel Integrates Building Materials That Combine a Traditional Look With Modern Convenience and Performance

To understand Trehel's unique approach to projects is really to understand the term design-build. When Trehel partnered with Tom Winkopp on Crawford Falls, a new 185,000 sf gated student housing community with condominiums and town homes for sale, both parties knew that the structures had to be durable and long lasting, while still offering a traditional design. With Trehel involved in the project from day one, a cohesive team of the developer, architects and general contractor were able to determine new and alternate building materials that would offer this project the affordability and durability it needed.

Through the evolution of building materials, this project's condos and town homes were able to be faced with vertical board and batten which will provide durability while still maintaining an arts and crafts style look. This new complex will provide 416 bedrooms through a mix of seven condominium buildings and two town home buildings. Interior finishes include granite counter tops in the kitchen and bathroom, along with study nooks in each bedroom. The complex also provides a clubhouse, lagoon style pool, and a covered pavilion with stone fireplace. (Cont.)

- FINANCIAL
- HISTORIC
- INDUSTRIAL
- INSTITUTIONAL
- MEDICAL
- MIXED-USE
- MULTI-FAMILY
- MUNICIPAL
- OFFICE SPACE
- RETAIL
- WORSHIP

- Featured Project
- Benefit News
- New Team Members
- 25th Anniversary Celebration
- Featured Subcontractor
- A Client's Story
- Project Highlights





*Buildings and Relationships
That Last A Lifetime!*

BENEFIT & FAMILY NEWS



PUBLISHED BY TREHEL CORPORATION

2ND QUARTER 2007

FEATURED PROJECT - CRAWFORD FALLS STUDENT HOUSING - CONTINUED



Rich Bartels is Project Manager for this new 185,000 sf student housing complex. Rich has been with Trehel since 2003 and has worked on other multi-family projects such as Tory Pointe, University Ridge, Hart's Cove and Overlook Condos. Great job Rich!



Danny Pelfrey is Superintendent for this project and has been with Trehel since 2002. Danny has also worked on several multi-family projects such as Tory Pointe, Hart's Cove and University Ridge. Trehel is proud of the fine job done on this project by Danny and the entire Trehel crew.

EMPLOYEE ANNIVERSARIES

APRIL

Chris Craig 1997
Bryan Yoder 1999
Jack Weber 2000
Dianne Wise 2001
Brad Stanley 2001
Joe Steinbrecher 2002
Larry Benson 2003
Gus Ferrusca 2003
Jimmy King 2003
Tim Cadaret 2005

MAY

Keith Wilbanks 2001
Rich Bartels 2003
Jon Hill 2003
Admon Campbell 2004
Charlynn Ezell 2006
Bedo Elias 2006

JUNE

Larry Medlin 1985
Marty White 1995
Dale Nalley 1995
Gerald Nalley 1995
Ronnie Burrell 1996
Phil Spangler 2000
Tony Rogers 2000
Leanna McCall 2002
Jesus Rivera 2002
Gregory Jakubetz 2005
Janet Coblens 2005
Keith Poole 2005
Timothy Murphy 2005

Lawrence Belcher 2005
Gualterio Canseco 2005
Michael Campbell 2006
Charlie Moore 2001

WELCOME ABOARD NEW EMPLOYEES



Gina Petti joined Trehel in April after moving to the area, with her fiancée, from San Francisco. Gina will be filling the role of Administrative Assistant, and has over seven years of experience in construction accounting and administration. Welcome aboard Gina!



Tyler McKee joined Trehel in July as an Assistant Superintendent. Tyler is from the Greenville area and enjoys golfing, fishing and attending church. Tyler's past experience includes light steel erection, carpentry and finishing. Congratulations to Tyler on his new position and welcome to the Trehel team!



Keith Crane joins Trehel with twenty years of experience ranging from carpentry work to iron work and welding. Keith is from the Mountain Rest area and enjoys farming and hunting. Congratulations to Keith on his new position as Superintendent for Trehel.



Chad Kirby joined the Trehel team in July and comes from a background with eight years experience as a custom home builder. Chad, who joins Trehel as a Superintendent, resides in Seneca with his wife and five children. When Chad is not busy, he enjoys fly-fishing and basically anything to do with the outdoors.



*Buildings and Relationships
That Last A Lifetime!*

25TH ANNIVERSARY CELEBRATION



PUBLISHED BY TREHEL CORPORATION

2ND QUARTER 2007



Trehel Celebrates 25 Years of Success

This year, Trehel Corporation celebrates its 25th Anniversary. Over this quarter century, the company has grown tremendously in every aspect. Our employees now represent over 150 families in our community. We wish to recognize each and every one as we look back at the last 25 years and look forward to the next 25.

On September 22nd, we will be celebrating the families that make Trehel Corporation what it is today. Every employee and their family is invited to join us at a family fun day in their honor. No family fun day is complete without all the things you would expect at the county fair. There will be carnival rides, food, games, clowns, music and maybe even a surprise or two.

Mark the date on your calendar and plan to spend the day enjoying time with your family. More details will be announced soon.

FEATURED SUBCONTRACTOR - GRAMLING BROTHERS

Gramling Brothers Contracting, Inc. has a 100 year history of business enterprise in South Carolina's Upstate, and drives its business with the motto of "Quality through the discipline of excellence." When fourth generation family member, John T. Gramling, III joined the family business, he saw the need to diversify their services and thus created Gramling Brothers Contracting, Inc. For 15 years, GBCI has been providing complete site preparation services, and has teamed with Trehel on many successful projects. Some of the larger projects we have partnered on include:

- | | |
|--|--------------------------|
| Dorman High Athletic Stadium | McLees Elementary School |
| Pickens County Library | NewSpring Church |
| Reverie On The Ashley | Beaumont Mills |
| Lyman United Methodist Church | |
| Spartanburg Methodist College Dorms and Vassey IT Center | |



Trehel would like to commend Gramling Brothers Contracting, Inc. for the fine work they provide, and we look forward to partnering with them on many future projects.



*Buildings and Relationships
That Last A Lifetime!*

TREHEL IN THE COMMUNITY



PUBLISHED BY TREHEL CORPORATION

2ND QUARTER 2007

A CLIENT'S STORY



Lyman United Methodist Church

P.O. Box 190
Lyman, SC 29365

106 Groce Road
Pastor: Rev. James W. Hatchell

Church: 864.439.4047
Parsonage: 864.439.2616

From: Dr. Marvin C. Woodson, Jr.
Chairman of the Building Committee
Lyman United Methodist Church

On March 22, 2004, a devastating fire totally destroyed our church building. On March 19, 2006, a beautiful new building was consecrated in a service conducted by our pastor, our district superintendent and our bishop. I will attempt to relate for potential clients of Trehel Construction



what occurred from the day in 2004 when our congregation experienced the depths of despair to the day in 2006 when that same congregation experienced indescribable joy.

Immediately after the fire we met as a congregation and resolved that the fire had destroyed our building, but it had not destroyed our Church. We were determined to rebuild. We knew that we faced a monumental challenge. Our attendance on Sunday mornings was averaging around one-hundred. Our insurance was not enough to replace the burned building. And, our congregation consisted of members with only average resources and a rather high average age. Knowing all of this, we still ventured out on faith and a building committee was formed. I was selected as the chairman of the committee because of my experience as a public school superintendent in renovating and constructing many school buildings.

The committee's first order of business, after the demolition of the burned building and settling our insurance claim, was to select an architectural firm to design our new building. We went through the formal process, and I was very pleased that the committee chose McMillan Smith and Partners of Spartanburg since this was the same firm that my school district had used when I was superintendent. In the meantime, our committee was meeting on a regular basis to determine what we wanted in a new building. We knew that we needed a sanctuary, an office wing and an education building. We also knew that for the church to survive and attract new members with children, we would have to have a family life center. But, how could we afford to build all of this? I went to see Ron Smith, Senior Partner, of our selected architectural firm and related the committee's concerns. Ron strongly recommended that we use the design-build process. He knew that my whole experience in building was in the public sector which required accepting the low bid and then dealing with the nightmare of change orders. Ron explained that with our limited resources we needed to know up front what the building would cost and that under the design-build process the committee, the architect, and the builder would work together to come up with a building plan which would be built by the builder at a guaranteed maximum price. This sounded so attractive to me that I and the architect assigned to our project, Tommy Kinghorn, went to the committee with this concept and the committee agreed that we would use this process.

We immediately went through the selection process and the Trehel Corporation was selected to construct our new church building. From the very beginning Trehel personnel were cooperative and anxious to please us. They quickly recognized the problems we faced with our



*Buildings and Relationships
That Last A Lifetime!*

TREHEL IN THE COMMUNITY



PUBLISHED BY TREHEL CORPORATION

2ND QUARTER 2007

A CLIENT'S STORY - CONT.

limited resources. They understood our burning desire to include a family life center even though we did not think we could afford it. They were open and honest about what their overhead charge was and what was included in this charge. Their profit charge was clearly defined. They included a contingency line item and guaranteed that any unused contingency would be credited back to us. After the architect completed his initial design, Trehel gave us the "Preliminary Price Check". The initial design included the family life center. The price check was substantially above what we could afford, and the committee was devastated. John Cox, our Project Manager assigned to us by Trehel, assured the committee that he would work diligently with the architect, Tommy Kinghorn, to redesign portions of the building without cutting quality. Within two weeks John and Tommy met with the committee with proposed changes which would bring us within budget. The committee was elated. The changes minimally reduced square footage and did not compromise quality. Shortly afterward, we were provided with a contract stating a "Guaranteed Maximum Price" which was within our budget. All of the above was accomplished in one year.

The Church's governing body approved the contract and Trehel immediately assigned us a Job Superintendent, Chris Frey. Chris and the Project Manager, John Cox began to work feverishly with our architect, Tommy Kinghorn, to start the actual construction. These three fine Christian men seemed to sense our congregation's strong desire to have a place to worship. They were highly organized and worked together very harmoniously.

Every day, they were looking for ways to save us money. Chris was so organized that no subcontractor had to ever wait on another subcontractor to get out of the way. In my opinion organization, design, and efficiency saved our church many dollars.

Early in the project, the Building Committee, to the dismay of the architect, had to cut out the covered portico at the front of the church building. This was a disappointment to everyone since this structure added so much in terms of both architecture and functionality. Late in the project John Cox prepared a meeting where he gave a totally transparent accounting of how every dollar had been spent. He then showed how much they had saved us through redesign, efficiency, and organization. This allowed us to go back and add our covered portico and about 75% of the other items that we had cut out earlier such as basketball goals in the family life center and a room divider in the children's church. I think the most important thing here is that Mr. Cox was delighted that he could go back and add these items.

We have now been our new church building fourteen months and we have grown tremendously. We now have many new young members with children. Our new family life center that the building committee fought so hard for has been a definite attraction. Before the fire our average attendance was around one-hundred. Our attendance is now around two-hundred-and-fifty. Our new building is a blessing to all of the original members and to all of our new members.

I know that by now you know that we at Lyman United Methodist Church are thrilled with the amount of building and the quality of the building that we received through the Design-Build process with Trehel Construction. We would highly recommend them to anyone considering any type of construction.

Earlier in this memorandum, I related to you that I had been involved in numerous construction projects as a school superintendent. One final thought I want to leave with you. I know that in the public sector we must use the bidding process. However, with this experience in design-build, I firmly believe that if we could use this process to construct school buildings we could save our taxpayers millions of dollars.

If after reading my account of our experience, you still have question about Trehel Construction or the Design-Build process, you may call me at 864-439-3948.

Dr. Marvin C. Woodson, Jr. - Chairman of Building Committee - Lyman United Methodist Church



*Buildings and Relationships
That Last A Lifetime!*

TREHEL IN THE PRESS



PUBLISHED BY TREHEL CORPORATION

2ND QUARTER 2007

Trehel Constructs New EMS Facility for Oconee Memorial Hospital

Thursday, June 21, 2007 marked the dedication for the new EMS building at Oconee Memorial Hospital. Located at Memorial Drive on the OMH campus, this new facility will offer the EMS department enough space to house eight ambulances. The building also includes training rooms, administrative offices, an employee lounge area with kitchen and separate sleeping quarters for personnel.



Pictured left is Project Manager, Tim Murphy, and Superintendent, Max Couch. Trehel is proud of the fine work the entire Trehel crew performed on this project. Pictured above, members of OMH and the EMS team dedicate their new facility.





*Buildings and Relationships
That Last A Lifetime!*

PROJECT HIGHLIGHTS

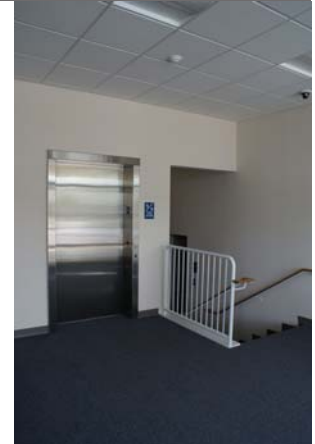


PUBLISHED BY TREHEL CORPORATION

2ND QUARTER 2007

Renovations and New Additions for West Gantt First Baptist Church Greenville, SC

Trehel Corporation was selected to assist West Gantt First Baptist Church with the recent renovations and additions to 18,783 sf of their worship facility. New additions to their buildings include a covered drop-off canopy and a two-story welcome area. This welcome area now joins the first and second floors of the structure through the addition of an elevator and staircase. This addition makes access to several different church buildings



much easier. The second phase of this project included several classroom wings, music rooms, restrooms, the pastor's office, administrative areas and the church fellowship hall. The terrific work done on this project was performed by Project Manager, John Cox (pictured left), Superintendent, Chris Frey (pictured right) and the entire skilled Trehel team.





*Buildings and Relationships
That Last A Lifetime!*

PROJECT HIGHLIGHTS



PUBLISHED BY TREHEL CORPORATION

2ND QUARTER 2007

Trehel Completes New “Phyllis Buchheit DeLapp Boardroom and Vassey Information Technology Center” for Spartanburg Methodist College - Spartanburg, SC

Over the years, Trehel has established a solid relationship with Spartanburg Methodist College, and is proud to be a part of their ever growing institution. Named after college trustee, Phyllis Buchheit DeLapp, and former benefactors Herbert and Rebecca Vassey, the new 4,213 sf facility will provide a new board room for the college Board of Trustees, along with new offices and workspace for the College’s Information Technology Department.

The board room, the main highlight of this new facility, boasts hand-crafted maple carpentry and a coffered ceiling with recessed lighting and a chandelier. A retractable projection screen is mounted at one end of the room and the walls are decorated with large gilded frames of past college trustee members.

The front entrance of the building replicated the design of the board room having a drop down ceiling with a chandelier. In addition, the building provides two private offices, a reception area, and an IT room which houses the College’s server. The server room contains a raised floor to enable cabling, along with a Leibert unit to control the humidity of the environment.



Trehel would like to congratulate Project Manager, Chris McGarr, Superintendent, Pyzon Moore, and the entire Trehel crew for a job well done on this highly successful project for Spartanburg Methodist College.

