



THE GENERAL CONDITIONS

CELEBRATING
25
YEARS
OF
DESIGN-BUILD

PUBLISHED BY TREHEL CORPORATION

1ST QUARTER 2008



*Buildings and
Relationships
That Last A
Lifetime!*

Trehel Completes New Lakefront Condominiums in Anderson, SC

Trehel Corporation recently completed construction of the new WaterMarke lakefront condominiums in Anderson, SC. Located near the intersection of Interstate 85 and SC Hwy. 76, this gated condominium complex is nestled on the shores of Lake Hartwell.

This private, gated condominium property contains 74 individual units, each with their own balcony view of the waterfront. In addition, the property offers covered parking for unit owners, a beautiful lighted outdoor pool with cabana, a clubhouse with bar and fitness room. This project is a design-build success between Trehel Corporation, Tom Winkopp Development and Signature Architects. Continued Pg.2



FINANCIAL
HISTORIC
INDUSTRIAL
INSTITUTIONAL
MEDICAL
MIXED-USE
MULTI-FAMILY
MUNICIPAL
OFFICE SPACE
RETAIL
WORSHIP

- Featured Project
- Employee News
- Software Upgrades
- Project Highlights
- Trehel In The Community
- Letters From Clients
- Featured Subcontractor





*Buildings and Relationships
That Last A Lifetime!*

FEATURED PROJECT



PUBLISHED BY TREHEL CORPORATION

1ST QUARTER 2008



One of the features that makes this project both unique and successful, is the post-tension concrete slab technique used to create the structure itself. Steel cables are used to apply tension and stability to the concrete slab which would otherwise be naturally weaker due to its bending load. This technique also allows for portions of the slab to jettison out beyond the overall shape of the structure, such as upper story balconies.

Trehel would like to thank all team members who were involved in this project and made it successful. This project has changed the local landscape, and has provided an increased level of living along the shores of Lake Hartwell.



Jack Weber
Vice President
Project Manager



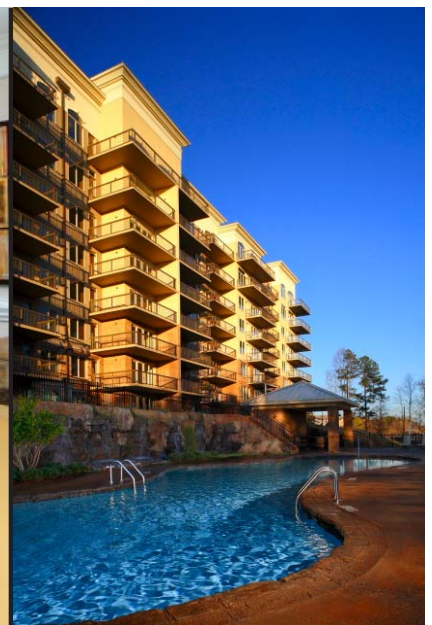
Gerald Nalley
Project Manager



Charlie Moore
Superintendent



Jon Hill
Superintendent





*Buildings and Relationships
That Last A Lifetime!*

EMPLOYEE NEWS



PUBLISHED BY TREHEL CORPORATION

1ST QUARTER 2008

EMPLOYMENT ANNIVERSARIES

JANUARY

Hugh Cox	1990
Tim Voyles	1998
David Stokes	1999
Anibal Medina	2000
Rolando Rivera	2000
Pyzon Moore	2001
Don Underwood	2002
Daniel Quintero	2002
Donnie Campbell	2004
Richard Kelly	2004
Greg Grindstaff	2005
Scott Brown	2007
Corey Scott	2007

FEBRUARY

Bob DuBose	1984
John Cox	2003
Chris Frey	2003



MARCH

Stan Lawson	1995
Lupe Leos	2001
Danny Pelfrey	2002
Mac Bolding	2003
Fedor Sakalosh, Jr	2003
Miguel Rodriguez	2003
Christine Hill	2006
Dwayne Clevenger	2006
Jose Elias	2007
Andy Jones	2007
Kelvin Anderson	2007



Trehel would like to introduce Amy Robinson, who joined our team in February as an Administrative Accountant. Amy recently moved to the area from Florida and now resides in Easley with her husband Kiley. Amy enjoys scrapbooking and hiking.



Trehel would like to congratulate Yvonne Bolding for being honored with The Golden Apple Award by WYFF. Yvonne has taught at Ambler Elementary for the past thirty three years. Yvonne's husband, Mac Bolding is a Trehel Layout Foreman at Trehel.



Trehel Vice President Marty White and wife Jan, proudly announce the marriage of their daughter, Whitney Allison, to Matthew Ryan Broderick. Whitney and Matthew were married January 19, 2008 at Shiloh United Methodist Church in Piedmont, SC. Whitney is a graduate of Anderson University and Matthew is a graduate of Clemson University. The couple honeymooned in Boone, NC and will reside in Powdersville, SC. Congratulations to Whitney and Matthew!

TREHEL INTRODUCES NEW DOCUMENT STORAGE SOFTWARE

Trehel Corporation is proud to introduce its latest software platform, ezDocs, which will provide employees the flexibility to access company documents from any location. The new ezDocs system basically converts all documents into an electronic format that can be shared and accessed from any location. This means that project invoices can be coded and approved in the field, reducing the amount of time project managers and superintendents have to be away from their jobsites..

Other unique features of this software help to catalogue and organize all documents pertaining to a certain job so that they can easily be accessed at a later date. This system will eventually do away with the massive stores of paper that were retained and archived for each individual job. This reduction in actual paper is yet another way that Trehel is going "green." More information will follow on this latest software upgrade, and a special thanks to all of our accounting personnel who have helped make this possible.





*Buildings and Relationships
That Last A Lifetime!*

PROJECT HIGHLIGHTS



PUBLISHED BY TREHEL CORPORATION

1ST QUARTER 2008

Trehel Completes the New Market | Post Office at The Reserve Village - Sunset, SC



Trehel Corporation has recently completed its third project at the new Reserve Village located on Lake Keowee in Sunset, SC. The new Market | Post Office building will serve as a general store, deli and a post office for the residents of The Reserve community.

Highlighting this unique addition to The Reserve Village are the quality materials and craftsmanship used to construct these adjoining buildings. Texas limestone was imported and covers the exterior of the Post Office building. Turn-of-the-century postal slots fill the interior of the building giving it Old World charm and ambiance.





*Buildings and Relationships
That Last A Lifetime!*

PROJECT HIGHLIGHTS



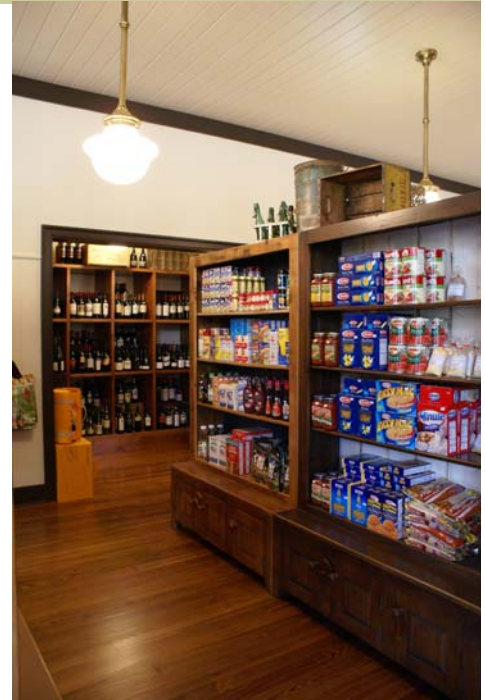
PUBLISHED BY TREHEL CORPORATION

1ST QUARTER 2008

Trehel Completes the New Market | Post Office at The Reserve Village - Sunset, SC



The new Market building has the feel of an old time general store with hand stocked shelving and bins full of imported merchandise. Once again, the materials and craftsmanship used on this building give it its unique character and charm. Heart of pine flooring runs throughout the market which includes a delicatessen with a marble bar and pedestal fountain stools. The exterior of The Market is covered with Doggit Mountain



Stone imported from Asheville, NC. The extended mezzanine roof is supported by massive Douglas Fir timbers which are fully covered with copper roofing.

This new addition to The Reserve Village will offer the residents a place to purchase staples and enjoy a relaxing afternoon meal. A person can enjoy a cup of coffee sitting in the hand made market furniture, or a meal can be enjoyed under the outside mezzanine. A special thanks to Tim Murphy, Vice President and Project Manager, and Donnie Phaneuf, Superintendent, for a terrific job on the new buildings at the Reserve Village.



Tim Murphy
VP | Project Manager

Donnie Phaneuf
Superintendent





*Buildings and Relationships
That Last A Lifetime!*

PROJECT HIGHLIGHTS



PUBLISHED BY TREHEL CORPORATION

1ST QUARTER 2008



Trehel Corporation Completes New Administrative Building for Westminster Presbyterian Church - Rock Hill, SC

Trehel Corporation has recently completed construction of a new two story, 12,368 sf administration building for Westminster Presbyterian Church located in Rock Hill, SC. This new building will house the Pastor and Associate Pastor's Suites, administrative offices for the church outreach and ministry programs, daycare administrative offices and an executive conference room with recessed lighting and glass storefront doors. Congratulations to Bryan Yoder, Project Manager (left), Bryan Thomas, Superintendent (right) and the entire Trehel crew for a job well done.



(Please see back page for project testimonial.)





*Buildings and Relationships
That Last A Lifetime!*

TREHEL IN THE COMMUNITY



PUBLISHED BY TREHEL CORPORATION

1ST QUARTER 2008

Trehel Supports The Local Foothills Gala Fundraiser

The sole purpose of this annual event is to raise funds and encourage volunteerism for specially selected local charities in Anderson, Oconee, and Pickens Counties.

Founded by a small group of community-minded citizens, the Foothills Gala was created to raise funds for, and awareness of, local "grassroots" organizations. The charities selected typically do not belong to national federations and receive very little or no funding from outside of the community.

The founders' vision for the Gala was to bring the three Upstate counties of Anderson, Oconee, and Pickens together in a new and unique partnership. Since 2002, that partnership has raised more than \$127,000 for local charities.

The recipients of this year's event were:

Clean Start of Anderson County

Happy Hooves of Pickens County

Senior Solutions of Oconee County

Each charity received a donation check for \$10,000 to assist with their ongoing work in the community.



Clean Start of Anderson County



Happy Hooves of Pickens County



Senior Solutions of Oconee County





*Buildings and Relationships
That Last A Lifetime!*

LETTERS FROM CLIENTS



PUBLISHED BY TREHEL CORPORATION

1ST QUARTER 2008



April 23, 2008

From our first meeting with Trehel discussing conceptual ideas, which include remodeling our existing sanctuary to building a new 12,000 sf administrative building, they have been a pleasure to deal with. They have gone above and beyond our expectations.

This was our first experience dealing with a design-build firm, and it has been seamless from the architectural recommendations to the oversight of the construction personnel. The level of promptness and professionalism displayed throughout our remodel and construction was

amazing. Westminster would recommend Trehel without reservation or hesitation. If I can answer any questions concerning our experience with Trehel, please do not hesitate to contact me.

Sincerely

Rick McKenrick
Director of Business Operations
Westminster Presbyterian Church
Rock Hill, SC 29732
803.366.3107



FEATURED SUBCONTRACTOR



**YODER'S
BUILDING SUPPLY**

Fair Play, SC

When it comes to "buildings and relationships that last a lifetime", partnering with a supplier where "quality is a way of life" couldn't be more important. About five years ago while working with Dan Brower on a project in Clemson, Yoder's was given the opportunity to begin a relationship with Trehel by filling a need for blinds. Providing the quality building supplies and services that their customers, such as Trehel, demand, has helped them to expand their commitment to excellence on projects such as Watermarke, Clemson Presbyterian Church, Overlook On The Lake, and Crawford Falls. Continuing to fill these needs as they partner with Trehel on current projects like Southern Wesleyan Fine Arts Building, Coach's T-60 Grill, Gary Player At The Cliffs, Bonclarken Adult Conference Center, and Highpointe Student Living, is a priority for Yoder's and they look forward to future projects where quality, service and excellence are key.