

## CELEBRATING 28 YEARS OF DESIGN / BUILD

TREHEL CORPORATION | 1376 TIGER BLVD. STE. 104 CLEMSON, SC 29631 - 864.654.6582 | 408 E. NORTH ST. GREENVILLE, SC 29601 - 864.284.9439



### WOFFORD COLLEGE STUDENT VILLAGE, PHASE V - SPARTANBURG, SC

Trehel Corporation began construction on Phase V of the Wofford College Student Village in September 2010. The 54,685 square foot mixed-use facility and dormitory. The multi-use ground floor will include Wofford College's new Center for Professional Excellence, classroom space, offices, and a deli-style café and small food market. The upper two levels will include four bedroom loft apartments with eighty beds. The project is slated to be a LEED certified project. Trehel is working with Summerour Architects out of Atlanta, Georgia, Keith Summerour and Anne-Michael Sustman. John Cox is Trehel's Project Manager and Keith Crane is the on-site Superintendent. The project is slated for completion in time for the fall semester of 2011.

The new facility is the fifth phase that Trehel has completed for the Wofford College Student Village since 2006. The Village features student housing in a neighborhood-style complex consisting of mixed-style dwellings.



FINANCIAL

HISTORIC

INDUSTRIAL

INSTITUTIONAL

MEDICAL

MIXED-USE

MULTI-FAMILY

MUNICIPAL

OFFICE SPACE

RETAIL

WORSHIP



### DESIGN / BUILD

- 2 ..... Project Highlights
- 3 ..... Project Highlights
- 4 ..... Jobs in Progress

integrity commitment excellence

## HIGHPOINTE STUDENT LIVING, PHASE III - SENECA, SC



Highpointe Student Living features an 181,440 square foot condominium community geared toward college students. The first and second phases of this gated community included 13 buildings, each with 12 units at 1,680 square feet. The recently completed third phase increased the community by three buildings containing 36 units. The Highpointe community also has a clubhouse, lagoon-style pool, 24-hour manned security entrance, and is home to the Tri-County Technical College Bridge to Clemson program.

integrity  commitment  excellence



FINANCIAL | HISTORIC | INDUSTRIAL | INSTITUTIONAL | MEDICAL | MIXED-USE | MULTI-FAMILY | OFFICE | RETAIL | WORSHIP

## PICKENS HIGH SCHOOL - PICKENS, SC



Progress continues on the new Pickens High School in Pickens, SC. Trehel Corporation began construction in early 2010 as a Joint Venture with Balfour Beatty Construction of Charlotte, NC, and McMillan Pazdan Smith of Greenville providing architectural services. This \$35 million project is a new 299,163 square foot prototype high school on a 144-acre site

in Pickens, SC. Jack Weber is Trehel's Project Manager, Tyler McKee is the on-site Project Engineer, and Chris Frey the on-site Superintendent for the stadium. Thank you for a job well-done thus far!

## OAKDALE BAPTIST CHURCH - TOWNVILLE, SC

Trehel Corporation began construction on a new facility for Oakdale Baptist Church in Townville, SC on February 12, 2010. The new Sanctuary addition and education spaces will be completed in early December with the dedication service being held on December 12, 2010. The new 13,442 square foot facility will seat over 500 people with adequate space for a 55 member choir.



A state-of-the-art Audio/Visual system has been installed and custom interior trim features and other amenities have created a functional and attractive facility for the congregation. Jim McKibben of McKibben Architects is the project architect, Tim Murphy the Project Manager, and Max Couch is the on-site Superintendent. Thank you team for a job well-done!

integrity  
 commitment  
 excellence

FINANCIAL | HISTORIC | INDUSTRIAL | INSTITUTIONAL | MEDICAL | MIXED-USE | MULTI-FAMILY | OFFICE | RETAIL | WORSHIP

## GOLDEN CORNER FAMILY PRACTICE - WEST UNION, SC



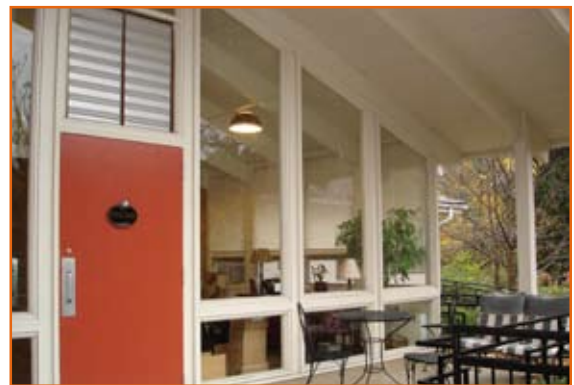
Trehel Corporation is on schedule to complete two additions totaling 3,293 square feet and the complete renovation of the existing Exam Rooms, Waiting Room and Business Office by the end of December 2010.

The existing parking lot was also enlarged to accommodate this growing practice and the new Covered Drop-Off area will be more accommodating to the patients. The practice, which currently has five healthcare providers, will have a total of (18) Exam Rooms and (3) Procedure Rooms. The practice continues to grow even through the extensive renovations. Paul Zugg of Signature Architects is the project architect, Tim Murphy the Project Manager and Cotton Moore is the on-site Superintendent.



## PEGGY CROSBY CENTER - HIGHLANDS, NC

Trehel Corporation is in the midst of replacing all (81) windows in this two-story community center in Highlands, NC. Kawneer thermally-broken aluminum windows with Solarban 60 insulated glazing are being custom fabricated to fit the many different window sizes in this approximately 60 year old facility. Jeff Weller of Summit Architecture is the project architect, Tim Murphy the Project Manager, and Max Couch is the on-site Superintendent.



FINANCIAL | HISTORIC | INDUSTRIAL | INSTITUTIONAL | MEDICAL | MIXED-USE | MULTI-FAMILY | OFFICE | RETAIL | WORSHIP

integrity commitment excellence