

CELEBRATING 29 YEARS OF DESIGN / BUILD

TREHEL CORPORATION | 1376 TIGER BLVD. STE. 104 CLEMSON, SC 29631 - 864.654.6582 | 408 E. NORTH ST. GREENVILLE, SC 29601 - 864.284.9439



PICKENS HIGH SCHOOL - PICKENS, SC

Progress continues on the new Pickens High School in Pickens, SC. Trehel began construction in early 2010 as a Joint Venture with Balfour Beatty Construction of Charlotte, NC, and McMillan Pazdan Smith of Greenville providing architectural services. This \$35 million project is a new 299,163 square foot prototype high school on a 144-acre site in Pickens, SC. Jack Weber is Trehel's Project Manager, Tyler McKee is the on-site Project Engineer, and Chris Frey the on-site Superintendent for the stadium. Photos reflect job progress through March 2011.



excellence
commitment
integrity

FINANCIAL

HISTORIC

INDUSTRIAL

INSTITUTIONAL

MEDICAL

MIXED-USE

MULTI-FAMILY

MUNICIPAL

OFFICE SPACE

RETAIL

WORSHIP



DESIGN / BUILD

- 2 Project Highlights
- 3 Jobs in Progress
- 4 Trehel News

WOFFORD COLLEGE STUDENT VILLAGE, PHASE V - SPARTANBURG, SC

Trehel Corporation began construction on Phase V of the Wofford College Student Village in September 2010. The 54,685 square foot mixed-use facility and dormitory will include Wofford College's new Center for Professional Excellence, classroom space, offices, a deli-style café and small food market. The upper two levels will include four bedroom loft apartments with eighty beds. The project is slated to be a LEED certified.

Trehel is working with Keith Summerour and Anne-Michael Sustman of Summerour Architects out of Atlanta, Georgia. John Cox is Trehel's Project Manager and Keith Crane is the on-site Superintendent. The project is on track for completion in time for the fall semester of 2011.

The new facility is the fifth phase that Trehel has completed for the Wofford College Student Village since 2006. The Village features student housing in a neighborhood-style complex consisting of mixed-style dwellings.

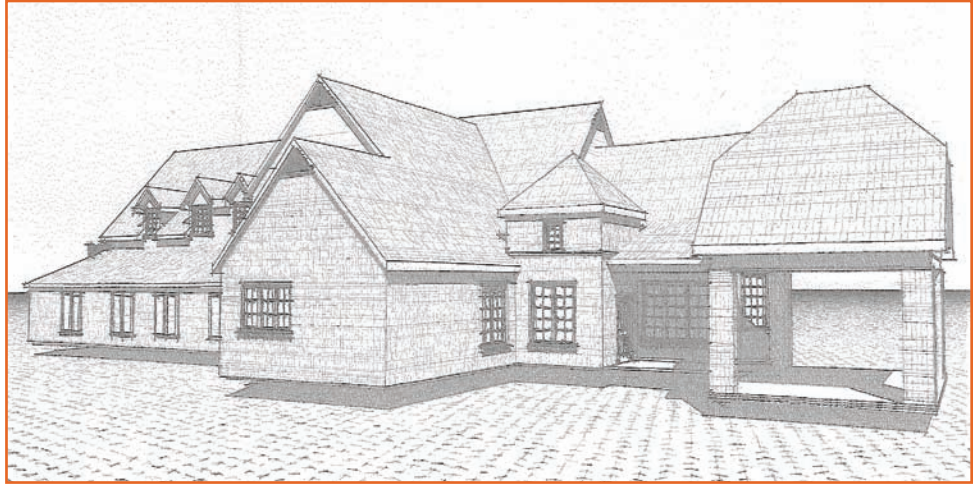


integrity commitment excellence

FINANCIAL | HISTORIC | INDUSTRIAL | INSTITUTIONAL | MEDICAL | MIXED-USE | MULTI-FAMILY | OFFICE | RETAIL | WORSHIP

CLEMSON EYE CLINIC - EASLEY, SC

Trehel Corporation began construction on a new clinic for Clemson Eye in Easley in February 2011. The new 8,226 square foot, two-story wood framed clinic is located behind Outback Steakhouse in Easley. The project is on schedule for completion in June 2011. Gerald Nalley is Trehel's Project Manager and Donnie Phaneuf the Superintendent.



PROJECT COMPLETIONS & STARTS

PROJECT	LOCATION	COMPLETION DATE
Camp Care	Inman, SC	March 2011
Pointe West Sales Office	Seneca, SC	February 2011
The Burger Joint	Clemson, SC	January 2011
Oakdale Baptist Church	Townville, SC	December 2010
Highpointe Student Living - Phase III	Seneca, SC	December 2010
Golden Corner Family Practice	Seneca, SC	December 2010
Robins Air Force Base	Warner-Robins, GA	December 2010
Milliken Guest House, Cafeteria & Interior Renovations	Spartanburg, SC	November 2010
Blue Ridge Bank Upfit	Walhalla, SC	October 2010
PROJECT	LOCATION	START DATE
Mountainview Medical Imaging	Seneca, SC	May 2011
Oconee County Airport Hangar	Seneca, SC	April 2011
Edwards Auto Renovation	Walhalla, SC	April 2011
Roy Metal Finishing Warehouse	Mauldin, SC	April 2011
Covenant United Methodist Church	Greer, SC	March 2011
Trinity Baptist Church	Seneca, SC	March 2011
Highpointe Student Living - Phase IV	Seneca, SC	January 2011
Clemson Eye Clinic	Easley, SC	January 2011
Oconee Urology	Seneca, SC	December 2010
Greenfield Industries Coating Room	Seneca, SC	December 2010
Windy Rush Tennis Facility	Charlotte, NC	December 2010

excellence
 commitment
 integrity

FINANCIAL | HISTORIC | INDUSTRIAL | INSTITUTIONAL | MEDICAL | MIXED-USE | MULTI-FAMILY | OFFICE | RETAIL | WORSHIP

finding optimum solutions to build relationships and buildings that last a lifetime



TREHEL EMPLOYEES BUILD THE NEW DILLON BULL LEE CHAPEL



Trehel Corporation employees had the honor of taking two “mission trips” to Dillon, South Carolina in the summer of 2010. While there, the group worked to construct the Dillon Bull Lee Chapel, which was dedicated in August. A winter concert was held in December in the new Chapel.



A big thank you to those who participated in this wonderful event, and to owners of the Chapel in Dillon, for ministering to our employees throughout the trip.

TREHEL'S OWN LINDA COWART HONORED



Trehel Corporation CFO Linda Cowart was honored with the Catherine Smith Award by the Clemson Area Chamber of Commerce in February 2011. The Catherine Smith Award is an annual award presented to an individual who has given “outstanding service to the Clemson Area Chamber of Commerce and the Clemson Area Community.”

"There's just no words to say how much this means to come from your peers and the people you work with every day." "The people I work with made this happen."

Will Huss, President of Trehel, said Cowart was recognized for her work as Treasurer of the Clemson Area Chamber of Commerce Board of Directors. “Linda has done a fantastic job under some difficult economic conditions,” Huss, who was last year’s recipient of the award, said. “One of the best things about Linda is that she makes other people look good. She enjoys working behind the scenes and other people get the credit. That’s not always good, but she enjoys it.”

excellence
commitment
integrity

FINANCIAL | HISTORIC | INDUSTRIAL | INSTITUTIONAL | MEDICAL | MIXED-USE | MULTI-FAMILY | OFFICE | RETAIL | WORSHIP